



- (51) **International Patent Classification:**
G06F 17/30 (2006.01)
- (21) **International Application Number:**
PCT/US20 15/045539
- (22) **International Filing Date:**
17 August 2015 (17.08.2015)
- (25) **Filing Language:** English
- (26) **Publication Language:** English
- (30) **Priority Data:**
62/039,612 20 August 2014 (20.08.2014) US
- (71) **Applicant:** GOOGLE INC. [US/US]; 1600 Amphitheatre Parkway, Mountain View, California 94043 (US).
- (72) **Inventors:** GRIMSMO, Nils; 1600 Amphitheatre Parkway, Mountain View, California 94043 (US). BEHZADI, Behshad; 1600 Amphitheatre Parkway, Mountain View, California 94043 (US).
- (74) **Agent:** MCCARTHY, Ryan; Fish & Richardson P.C., P.O. Box 1022, Minneapolis, Minnesota 55440-1022 (US).
- (81) **Designated States** (unless otherwise indicated, for every kind of national protection available): AE, AG, AL, AM, AO, AT, AU, AZ, BA, BB, BG, BH, BN, BR, BW, BY,

BZ, CA, CH, CL, CN, CO, CR, CU, CZ, DE, DK, DM, DO, DZ, EC, EE, EG, ES, FI, GB, GD, GE, GH, GM, GT, HN, HR, HU, ID, IL, IN, IR, IS, JP, KE, KG, KN, KP, KR, KZ, LA, LC, LK, LR, LS, LU, LY, MA, MD, ME, MG, MK, MN, MW, MX, MY, MZ, NA, NG, NI, NO, NZ, OM, PA, PE, PG, PH, PL, PT, QA, RO, RS, RU, RW, SA, SC, SD, SE, SG, SK, SL, SM, ST, SV, SY, TH, TJ, TM, TN, TR, TT, TZ, UA, UG, US, UZ, VC, VN, ZA, ZM, ZW.

- (84) **Designated States** (unless otherwise indicated, for every kind of regional protection available): ARIPO (BW, GH, GM, KE, LR, LS, MW, MZ, NA, RW, SD, SL, ST, SZ, TZ, UG, ZM, ZW), Eurasian (AM, AZ, BY, KG, KZ, RU, TJ, TM), European (AL, AT, BE, BG, CH, CY, CZ, DE, DK, EE, ES, FI, FR, GB, GR, HR, HU, IE, IS, IT, LT, LU, LV, MC, MK, MT, NL, NO, PL, PT, RO, RS, SE, SI, SK, SM, TR), OAPI (BF, BJ, CF, CG, CI, CM, GA, GN, GQ, GW, KM, ML, MR, NE, SN, TD, TG).

Declarations under Rule 4.17:

- as to applicant's entitlement to apply for and be granted a patent (Rule 4.1 7(H))
- as to the applicant's entitlement to claim the priority of the earlier application (Rule 4.1 7(in))

[Continued on nextpage]

- (54) **Title:** INTERPRETING USER QUERIES BASED ON NEARBY LOCATIONS

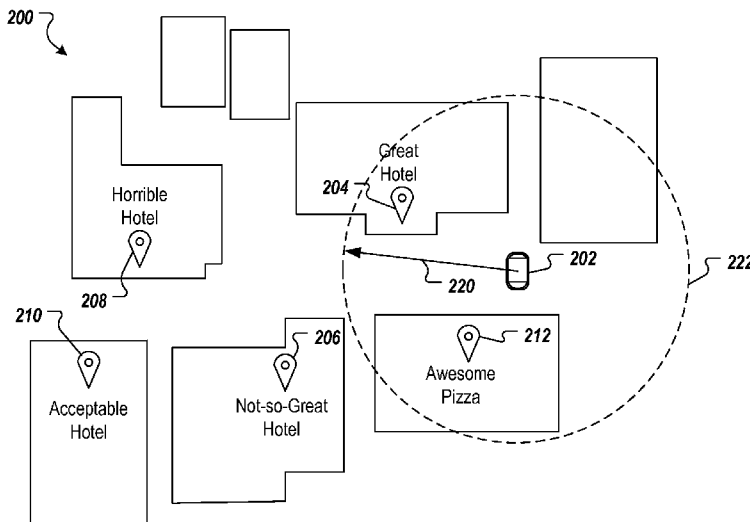


FIG. 2A

(57) **Abstract:** Methods, systems, and apparatus, including computer programs encoded on a computer storage medium, for receiving a query provided from a user device, and determining that the query implicitly references some entity, and in response: obtaining an approximate location of the user device, obtaining a set of entities comprising one or more entities, each entity in the set of entities being associated with the approximate location, selecting an entity from the set of entities based on one or more entity query patterns associated with the entity, and providing a revised query based on the query and the entity, the revised query explicitly referencing the entity.



Published:

— with international search report (Art. 21(3))

INTERPRETING USER QUERIES BASED ON NEARBY LOCATIONS

BACKGROUND

The Internet provides access to a wide variety of resources, such as image files, audio files, video files, and web pages. A search system can identify resources in response to queries submitted by users and provide information about the resources in a manner that is useful to the users. The users can navigate through, e.g., select, search results to acquire information of interest.

SUMMARY

This specification relates to interpreting user queries based on a location of a user device.

Implementations of the present disclosure are generally directed to rewriting queries based on one or more implied entities. More particularly, implementations of the present disclosure are directed to identifying a set of entities based on an approximate location of a user device that submits a query, selecting an entity of the set of entities based on a query pattern of the query and one or more entity query patterns associated with the entity, and rewriting the query to explicitly reference the entity of the set of entities.

In general, innovative aspects of the subject matter described in this specification can be embodied in methods that include actions of receiving a query provided from a user device, and determining that the query implicitly references an entity, and in response: obtaining an approximate location of the user device, obtaining a set of entities including one or more entities, each entity in the set of entities being associated with the approximate location, selecting an entity from the set of entities based on one or more entity query patterns associated with the entity, and providing a revised query based on the query and the entity, the revised query explicitly referencing the entity. Other implementations of this aspect include corresponding systems, apparatus, and computer programs, configured to perform the actions of the methods, encoded on computer storage devices.

These and other implementations can each optionally include one or more of the following features: selecting an entity from the set of entities based on one or more entity query patterns associated with the entity includes: obtaining a set of entity query patterns associated with the entity, the set of entity query patterns comprising the one or more entity query patterns, and determining that an entity query pattern of the set of entity

query patterns matches a query pattern of the query; an entity query pattern of the one or more entity query patterns is based on one or more queries that explicitly reference the entity; the one or more entity query patterns are associated with a search log; actions further include determining that the set of entities includes a plurality of entities, and in response, selecting the entity from the set of entities; actions further include comparing one or more attributes of respective entities in the set of entities, the entity being selected based on respective one or more attributes; and, if a location of a respective entity is within a threshold distance of the approximate location, the respective entity is included in the set of entities.

Particular implementations of the subject matter described in this specification can be implemented so as to realize one or more of the following advantages. In some examples, the user submitting the query does not need to know the name of the entity that is the subject of the query. For example, the user can be standing near a monument and can submit the query [what is this monument], without having to first determine the name of the monument. In some examples, the user does not need to know how to properly pronounce and/or spell the name of the entity. For example, a user that does not speak German can be on vacation in Zurich, Switzerland and can submit the query [opening hours], while standing near a restaurant called "Zeughauskeller," which may be difficult to pronounce and/or spell for the user. As another example, implementations of the present disclosure enable users to more conveniently and naturally interact with a search system (e.g., submitting the query [show me lunch specials] instead of the query [Fino Ristorante & Bar lunch specials]. These examples highlight simplification of information retrieval and increased information accessibility to users that are provided by implementations of the present disclosure. For example, users do not have to first submit queries to determine the name of an entity, before submitting queries to retrieve other information about the entity. This provides the advantage of reducing the overall number of queries that might be submitted to a search system, thereby reducing the bandwidth, computational power, and/or memory required by the search system to resolve queries and provide search results.

The details of one or more implementations of the subject matter described in this specification are set forth in the accompanying drawings and the description below. Other features, aspects, and advantages of the subject matter will become apparent from the description, the drawings, and the claims.

BRIEF DESCRIPTION OF THE DRAWINGS

FIG. 1 depicts an example environment in which a search system provides search results based on interpreted user queries.

5 FIGs. 2A and 2B depict example use cases in accordance with implementations of the present disclosure.

FIG. 3 depicts an example process that can be executed in accordance with implementations of the present disclosure.

FIG. 4 depicts an example process that can be executed in accordance with implementations of the present disclosure.

10 Like reference numbers and designations in the various drawings indicate like elements.

DETAILED DESCRIPTION

Implementations of the present disclosure are generally directed to rewriting queries based on one or more implied entities. More particularly, implementations of the present disclosure are directed to determining two or more entities that a received query may be implicitly about, selecting an entity of the two or more entities based on a query pattern of the query and one or more entity query patterns associated with the entity, and rewriting the query to explicitly reference the selected entity. In some implementations, a set of entities is identified based on an approximate location of a user device that submits a query, each entity in the set of entities being determined to be sufficiently close to the approximate location. In some implementations, and as described in further detail herein, for each entity in the set of entities, it is determined whether the query may be implicitly referencing the entity. In some examples, for each entity, a set of entity query patterns is provided and includes one or more entity query patterns associated with the entity. In some examples, an entity is selected from the set of entities based on a query pattern of the query and the set of entity query patterns. The query is rewritten to provide a revised query that explicitly references the selected entity. In some examples, search results are provided based on the revised query.

30 FIG. 1 depicts an example environment 100 in which a search system provides search results based on interpreted user queries. In some examples, the example environment 100 enables users to interact with one or more computer-implemented services. Example computer-implemented services can include a search service, an

electronic mail service, a chat service, a document sharing service, a calendar sharing service, a photo sharing service, a video sharing service, blogging service, a micro-blogging service, a social networking service, a location (location-aware) service, a check-in service and a ratings and review service. In the example of FIG. 1, a search system 120 is depicted, which provides a search service, as described in further detail
5 herein.

With continued reference to FIG. 1, the example environment 100 includes a network 102, e.g., a local area network (LAN), wide area network (WAN), the Internet, or a combination thereof, connects web sites 104, user devices 106, and the search system
10 120. In some examples, the network 102 can be accessed over a wired and/or a wireless communications link. For example, mobile computing devices, such as smartphones can utilize a cellular network to access the network 102. The environment 100 may include millions of web sites 104 and user devices 106.

In some examples, a web site 104 is provided as one or more resources 105
15 associated with a domain name and hosted by one or more servers. An example web site is a collection of web pages formatted in an appropriate machine-readable language, e.g., hypertext markup language (HTML), that can contain text, images, multimedia content, and programming elements, e.g., scripts. Each web site 104 is maintained by a publisher, e.g., an entity that manages and/or owns the web site.

In some examples, a resource 105 is data provided over the network 102 and that
20 is associated with a resource address, e.g., a uniform resource locator (URL). In some examples, resources 105 that can be provided by a web site 104 include web pages, word processing documents, and portable document format (PDF) documents, images, video, and feed sources, among other appropriate digital content. The resources 105 can include content, e.g., words, phrases, images and sounds and may include embedded information,
25 e.g., meta information and hyperlinks, and/or embedded instructions, e.g., scripts.

In some examples, a user device 106 is an electronic device that is capable of requesting and receiving resources 105 over the network 102. Example user devices 106
30 include personal computers, laptop computers, and mobile computing devices, e.g., smartphones and/or tablet computing devices, that can send and receive data over the network 102. As used throughout this document, the term mobile computing device ("mobile device") refers to a user device that is configured to communicate over a mobile communications network. A smartphone, e.g., a phone that is enabled to communicate over the Internet, is an example of a mobile device. A user device 106 can execute a user

application, e.g., a web browser, to facilitate the sending and receiving of data over the network 102.

In some examples, to facilitate searching of resources 105, the search system 120 identifies the resources 105 by crawling and indexing the resources 105 provided on web sites 104. Data about the resources 105 can be indexed based on the resource to which
5 the data corresponds. The indexed and, optionally, cached copies of the resources 105 are stored in a search index 122.

The user devices 106 submit search queries 109 to the search system 120. In some examples, a user device 106 can include one or more input modalities. Example
10 modalities can include a keyboard, a touchscreen and/or a microphone. For example, a user can use a keyboard and/or touchscreen to type in a search query. As another example, a user can speak a search query, the user speech being captured through a microphone, and being processed through speech recognition to provide the search query.

In response to receiving a search query 109, the search system 120 accesses the
15 search index 122 to identify resources 105 that are relevant to, e.g., have at least a minimum specified relevance score for, the search query 109. The search system 120 identifies the resources 105, generates a search results display 111 that includes search results 112 identifying resources 105, and returns the search results display 111 to the user devices 106. In an example context, a search results display can include one or more
20 web pages, e.g., one or more search results pages. In some examples, a web page can be provided based on a web document that can be written in any appropriate machine-readable language. It is contemplated, however, that implementations of the present disclosure can include other appropriate display types. For example, the search results can be provided in a display generated by an application that is executed on a computing
25 device, and/or a display generated by an operating system, e.g., mobile operating system. In some examples, search results can be provided based on any appropriate form, e.g., Javascript-html, plaintext.

A search result 112 is data generated by the search system 120 that identifies a resource 105 that is responsive to a particular search query, and includes a link to the
30 resource 105. An example search result 112 can include a web page title, a snippet of text or a portion of an image extracted from the web page, and the URL of the web page. In some examples, data provided in the search results 112 can be retrieved from a resource data store. For example, the search system 120 can provide the search results display 111, which displays the search results 112. In some examples, the search results display 111

can be populated with information, e.g., a web page title, a snippet of text or a portion of an image extracted from the web page, that is provided from the resource data store.

In some examples, data for the search queries 109 submitted during user sessions are stored in a data store, such as the historical data store 124. For example, the search
5 system 120 can store received search queries in the historical data store 124.

In some examples, selection data specifying actions taken in response to search results 112 provided in response to each search query 109 are also stored in the historical data store 124, for example, by the search system 120. These actions can include whether a search result 112 was selected, e.g., clicked or hovered over with a pointer. The
10 selection data can also include, for each selection of a search result 112, data identifying the search query 109 for which the search result 112 was provided.

In accordance with implementations of the present disclosure, the example environment 100 also includes a query interpretation system 130 communicably coupled to the search system 120, e.g., directly coupled or coupled over a network such as
15 network 102. Although the search system 120 and the query interpretation system 120 are depicted as separate systems in FIG. 1, it is contemplated that the search system 120 can include the query interpretation system 130. In some implementations, the query interpretation system 130 provides a revised query based on a query received from a user device 106. In some examples, and as described in further detail herein, the revised query
20 is provided based on an approximate location of the user device 106 that provided the query, and one or more entities that are determined to be proximate to the user device 106. In some examples, the search results 112 provided by the search system 120 are responsive to the revised query.

In some implementations, a plurality of entities and information associated
25 therewith can be stored as structured data in an entity graph. In some examples, an entity graph includes a plurality of nodes and edges between nodes. In some examples, a node represents an entity and an edge represents a relationship between entities. In some examples, the entity graph can be provided based on an example schema that structures data based on domains, types and properties. In some examples, a domain includes one or
30 more types that share a namespace. In some examples, a namespace is provided as a directory of uniquely named objects, where each object in the namespace has a unique name, e.g., identifier. In some examples, a type denotes an "is a" relationship about a topic, and is used to hold a collection of properties. In some examples, a topic represents an entity, such as a person, place or thing. In some examples, each topic can have one or

more types associated therewith. In some examples, a property is associated with a topic and defines a "has a" relationship between the topic and a value of the property. In some examples, the value of the property can include another topic. In some examples, an entity can be associated with a unique identifier within the entity graph. For example, the
5 entity Alcatraz Island can be assigned the identifier /m/0h594.

In some implementations, a plurality of entities can be provided in one or more databases. For example, a plurality of entities can be provided in a table that can provide data associated with each entity. Example data can include a name of the entity, a location of the entity, one or more types assigned to the entity, one or more ratings associated with
10 the entity, a set of entity query patterns associated with the entity, and any other appropriate information that can be provided for the entity. In some examples, an entity can be associated with a unique identifier within the one or more databases. For example, the entity Alcatraz Island can be assigned the identifier /m/0h594.

Implementations of the present disclosure are generally directed to rewriting
15 queries based on one or more implied entities. More particularly, implementations of the present disclosure are directed to identifying a set of entities based on an approximate location of a user device that submits a query, and rewriting the query to explicitly reference an entity of the set of entities, which the query is determined to implicitly reference.

20 Implementations of the present disclosure will be described in further detail herein with reference to example use cases. FIGs. 2A and 2B depict example use cases in accordance with implementations of the present disclosure. In the examples of FIGs. 2A and 2B, an area 200 is provided, in which a user device 202 is located. Multiple entities are also located within the area 200. Example entities can include a restaurant, a bar, a
25 hotel, a theater, a school, a university, a music venue, a tourist attraction, and a park. It is appreciated that implementations of the present disclosure are not limited to entities specifically identified herein. In the depicted example, an entity "Great Hotel" 204, an entity "Not-so-Great Hotel" 206, an entity "Horrible Hotel" 208, an entity "Acceptable Hotel" 210, and an entity "Awesome Pizza" 212 are provided in the area 200.

30 In accordance with implementations of the present disclosure, a query is received from a user device. For example, the user device 202 can provide a query to a search system, e.g., the search system 120 of FIG. 1. In some examples, it can be determined that the query is implicitly about an entity. In some examples, if the query is absent an explicit reference to an entity, it can be determined that the query is implicitly about an entity. In

some examples, if the query includes a pronoun, it can be determined that the query is implicitly about an entity.

In some implementations, the received query can be processed and can be compared to one or more query patterns to determine whether the query is implicitly
5 referencing an entity. In some examples, each query pattern of the one or more query patterns is indicative of a query implicitly referencing an entity. In some implementations, the query is processed to remove one or more stop words and/or conversational terms to provide a cleaned query. For example, the example query [can you please show me ratings] can be processed to provide [ratings]. In some examples, a query index can be
10 provided and can map one or more queries, or cleaned queries, to respective sets of query patterns, each set of query patterns including one or more query patterns. For example, a query can be received, and a set of query patterns associated with the query, or cleaned query based on the query, can be provided from the query index.

In some examples, the cleaned query is compared to each query pattern of the one
15 or more query patterns, again, each query pattern indicating an implicit reference to some entity. In some examples, a query pattern includes one or more terms. Example query patterns can include [ratings], [restaurant ratings], and [theater ratings]. In some examples, a query pattern can include one or more wildcards. An example query pattern can include [* ratings], where * indicates a wildcard, e.g., restaurant, theater.

In some examples, if the query matches a query pattern of the one or more query
20 patterns, it is determined that the query is implicitly about some entity. In some examples, if the query does not match a query pattern, it is determined that the query is not implicitly about some entity. For example, the clean query [ratings], from the example above, can match the query pattern [* ratings]. Consequently, it can be determined that
25 the query [can you please show me ratings] is implicitly about some entity. As another example, the example query [can you please show me ratings for Awesome Pizza] can be processed to provide the cleaned query [ratings Awesome Pizza]. The cleaned query [ratings Awesome Pizza] can be compared to one or more query patterns, and it can be determined that the cleaned query does not match any of the one or more query patterns.
30 For example, the term "Awesome Pizza" is specific to an entity, and is thus, not included in any of the query patterns. Consequently, it is determined that the query [can you please show me ratings for Awesome Pizza] is not implicitly about some entity. Instead, and in this example, the query [can you please show me ratings for Awesome Pizza] is explicitly

about an entity, i.e., Awesome Pizza. In some examples, an entity is specific to a term, if the term explicitly references the entity.

In some implementations, in response to determining that the query is implicitly about an entity, an approximate location of the user device that submitted the query can be determined. In some examples, the approximate location can be determined based on one or more location-related signals. Example location related-signals can include cellular signals, global-positioning system (GPS) signals, wireless signals (WiFi), and the like. In some examples, location data that is representative of the one or more location-related signals is provided with the query. In some examples, the location data is provided to a location service, which processes the location data and provides the approximate location of the user device. In some examples, the approximate location can be provided as geographic coordinates, e.g., longitude, latitude.

In some examples, a confidence score can be associated with the approximate location. For example, the location service can provide the approximate location and the confidence score. In some examples, the confidence score represents a degree of certainty as to the accuracy of the approximate location. In some implementations, if the confidence score does not exceed a threshold confidence score, the query is not interpreted.

In some examples, a time can be associated with the approximate location. For example, the location service can provide the approximate location and a time associated therewith. In some examples, the time indicates an approximate time, at which the user device is determined to be or have been at the approximate location. In some implementations, if the approximate location is not determined to be sufficiently fresh, the query is not interpreted. In some examples, a time difference can be determined between a current time and the time associated with the approximate location and can be compared to a threshold difference. In some examples, if the time difference exceeds the threshold difference, the approximate location is determined to not be sufficiently fresh. In some examples, the current time is provided as the time, at which the query was sent from the user device, or received by the search system.

In some implementations, a set of entities is provided based on the approximate location. For example, if the confidence score exceeds the threshold confidence score and/or the approximate location is sufficiently fresh, the set of entities is provided, as described below. In some examples, the set of entities includes one or more entities. In some implementations, the set of entities includes one or more entities that are determined

to be sufficiently close to the approximate location, such that the query could be potentially about the one or more entities.

In some implementations, the one or more entities are selected for inclusion in the set of entities based on a location of a respective entity relative to the approximate location. In some examples, entities that are within a threshold distance, e.g., threshold radius, of the location can be identified, and are included in the set of entities. For example, a geographic location can be divided into a grid that includes a plurality of cells, e.g., square or rectangular cells, each cell accounting for an area of the geographic location. In some examples, each cell is associated with a set of entities that are located in the respective area. In some examples, a cell, within which the approximate location lies can be identified, and can be provided as a central cell. In some examples, a plurality of surrounding cells that surround the central cell can be identified. For example, any cell that is at least partially within the threshold distance can be provided as a surrounding cell and can be included in the plurality of surrounding cells. In some examples, the set of entities includes all entities associated with the central cell and each of the surrounding cells in the plurality of surrounding cells.

In the examples of FIGs. 2A and 2B, a threshold radius 220 is provided, which defines a circular area 222. Although the example area 222 is circular, it is contemplated that the area can include any appropriate geometric shape. In some examples, entities that lie within the area 222 are included in the set of entities. Consequently, in the example of FIG. 2A, the entity "Great Hotel" 204 and the entity "Awesome Pizza" 212 are included in the set of entities, and in the example of FIG. 2B, the entity "Great Hotel" 204, the entity "Not-so-Great Hotel" 206 and the entity "Awesome Pizza" 212 are included in the set of entities. In some examples, the approximate location can be provided to an entity service, which processes the approximate location and provides the set of entities.

In some implementations, each entity is associated with a respective type. In some examples, the type corresponds to a category associated with the entity. For example, the entity "Great Hotel" 204 can be provided as a type [hotel]. As another example, the entity "Awesome Pizza" 212 can be provided as a type [restaurant]. In some examples, the entity service provides the respective type for each entity in the set of entities. In some examples, the type of an entity is determined from the knowledge graph, or database, which store information about respective entities, as described above.

In accordance with implementations of the present disclosure, for each entity in the set of entities, it is determined whether the query may be implicitly referencing the

entity. In some implementations, for each entity in the set of entities, a set of entity query patterns is provided. For example, an entity can be indexed to a set of entity query patterns stored in a database of entity query patterns. In some examples, a set of entity query patterns includes one or more entity query patterns.

5 In some implementations, an entity query pattern represents one or more queries that have been submitted for a particular entity. That is, for example, an entity query pattern represents one or more queries that have been submitted and explicitly reference the particular entity. In some examples, search queries from a search log can be processed to identify an entity query pattern for the particular entity. For example, the example
10 entity Alcatraz can be considered. Example queries for the entity Alcatraz can be retrieved from a search log and can include [famous inmates of alcatraz], [who escaped from alcatraz], and [number of inmates at alcatraz]. Consequently, one or more example entity query patterns can be provided, which can include [famous inmates *], [who escaped from *] and/or [number of inmates *].

15 As another example, and continuing with the examples of FIGs. 2A and 2B provided above, the example queries [ratings for awesome pizza], [awesome pizza ratings], [show me awesome pizza rating] can be provided in a search log, which explicitly reference the entity Awesome Pizza. Consequently, one or more example entity query patterns can be provided for Awesome Pizza, which can include [ratings], [* ratings] and/or [ratings *]. As another example, the example queries [has awesome pizza won any food awards] and [when does awesome pizza open] can be provided in the
20 search log, which explicitly reference the entity Awesome Pizza. Consequently, one or more example entity query patterns can be provided for Awesome Pizza, which can include [* food awards] and [when * open]. As another example, the example queries
25 [how many suites does great hotel have], [how many conference rooms does great hotel have], and [how can I make a reservation at great hotel]. Consequently, one or more example entity query patterns can be provided for Great Hotel, which can include [how many suites *], [how many conference rooms *], and [reservation *].

30 In some examples, an entity query pattern for a particular query and entity is provided, if the particular query has been submitted a threshold number of times for the entity. For example, it can be determined, e.g., from the search log, that the query [who escaped from alcatraz] has been submitted, e.g., to a search service, X times, and that X exceeds the threshold number of times. Consequently, the entity query pattern [who escaped from *] can be provided in a set of entity query patterns associated with the entity

Alcatraz. As another example, it can be determined, e.g., from the search log, that the query [alcatraz gift shop] has been submitted, e.g., to a search service, Y times, and that Y does not exceed the threshold number of times. Consequently, an entity query pattern for the query [alcatraz gift shop] is not provided in the set of entity query patterns associated with the entity Alcatraz.

In some implementations, the query pattern of the query is compared to each entity query pattern in the set of entity query patterns for each entity in the set of entities. In some examples, if the query pattern of the query matches an entity query pattern associated with an entity, the entity is included in a sub-set of entities. For example, the query [how many suites does it have], and a set of entities can be provided that includes Great Hotel among other entities, e.g., Awesome Pizza. The query pattern for the query can be provided as [how many suites *]. A set of entity query patterns associated with the entity Great Hotel can include the example entity query pattern [how many suites *]. It can be determined that the query pattern of the query matches the entity query pattern of the entity Great Hotel. Consequently, the entity Great Hotel is included in the sub-set of entities.

In some implementations, a revised query is provided based on the query and at least one entity that is selected from the sub-set of entities. In some examples, if the sub-set of entities includes a single entity, that entity is selected. In some examples, the revised query is provided by rewriting the query to explicitly reference the selected entity. In some examples, the revised query explicitly names the entity. In some examples, the revised query includes the unique identifier assigned to the entity.

In some implementations, if the sub-set of entities includes a plurality of entities, an entity is selected from the set of entities. In some examples, the entity is selected based on respective attributes of the entities. Example attributes can include review rating and popularity. For example, it can be determined whether all entities of the sub-set of entities include at least one attribute in common, e.g., each entity has a review rating associated therewith. In some examples, an attribute value for the common attribute can be provided for each entity of the sub-set of entities, and the entity having the highest attribute value is selected. For example, the entity having the highest review rating is selected. As another example, the entity having the highest popularity is selected. In some examples, the entity is selected based on one or more previously selected entities. For example, a type of a previously selected entity can be used to select an entity, when multiple types of entities are provided in a sub-set of entities. For example, the query [show me reviews] can be

relevant to the types [restaurant] and [hotel], among others, and a sub-set of entities can include entities of the type [restaurant] and [hotel]. It can be determined that an entity previously selected by the user was of the type [hotel]. Consequently, an entity of the type [hotel] is selected from the sub-set of entities.

5 In some implementations, the entity is selected from the sub-set of entities by a user. For example, in response to determining that the sub-set of entities includes two or more entities, an interface can be displayed to the user, and can include graphical representations of each of the two or more entities. In some examples, the user selects an entity using the interface, and the revised query is provided based on the user-selected
10 entity.

 In some implementations, the revised query is provided to a search service. For example, the revised query can be processed by the search service 120 of FIG. 1. In some examples, the search service provides search results that are responsive to the revised query, which search results are displayed to the user. For example, the search results 112
15 of FIG. 1 can be provided based on the revised query.

 Implementations of the present disclosure are described in further detail with reference to examples based on the example use cases of FIGs. 2A and 2B.

 With reference to FIG. 2A, and in one example, the search query [has this place won any food awards] is received from the user device 202. It is determined that the
20 entity "Great Hotel" 204 and the entity "Awesome Pizza" 212 are within the threshold distance of the approximate location of the user device 202. Consequently, the entities "Great Hotel" 204 and "Awesome Pizza" 212 are included in a set of entities. In this example, it is determined that the query pattern of the query [has this place won any food awards] is provided as [* food awards]. A set of entity query patterns for the entity "Great
25 Hotel" 204 and a set of entity query patterns for the entity "Awesome Pizza" 212 are provided. It is determined that the query pattern [* food awards] of the query matches an entity query pattern, e.g., [* food awards], that is in the set of entity query patterns associated with the entity "Awesome Pizza" 212. Consequently, the entity "Awesome Pizza" 212 is included in a sub-set of entities. It is determined that the query pattern [*
30 food awards] of the query does not match an entity query patterns in the set of entity query patterns associated with the entity "Great Hotel" 204. Consequently, the entity "Great Hotel" 204 is not included in the sub-set of entities. It is determined that the entity "Awesome Pizza" 212 is the only entity in the sub-set of entities. Consequently, the entity "Awesome Pizza" 212 is selected, and the query is revised to provide a revised query that

explicitly references the entity "Awesome *Pizza*" 212, e.g., [awesome pizza food awards]. The revised query can be provided to a search service, and search results that are responsive to the revised query can be received.

5 With reference to FIG. 2B, and in another example, the search query [show me room rates] is received, and it is determined that the entity "Great Hotel" 204, the entity "Not-so-Great Hotel" 206, and the entity "Awesome Pizza" 212 are within the threshold distance of the approximate location of the user device 202. Consequently, the entities "Great Hotel" 204, "Not-so-Great Hotel" 206 and "Awesome Pizza" 212 are included in a set of entities. In this example, it is determined that the query is associated with the query pattern [room rates]. A set of entity query patterns for the entity "Great Hotel" 204, a set of entity query patterns for the entity "not-so-Great Hotel" 206, and a set of entity query patterns for the entity "Awesome Pizza" 212 are provided. It is determined that the query pattern [room rates] of the query matches entity query patterns, e.g., [room rates], that are in the respective sets of entity query patterns associated with the entities "Great Hotel" 10 204 and "Not-so-Great Hotel" 206. Consequently, the entities "Great Hotel" 204 and "Not-so-Great Hotel" 206 are included in a sub-set of entities. Also in this example, it is determined that the query pattern of the query does not match any entity query patterns in the set of entity query patterns associated with the entity "Awesome Pizza" 212. Consequently, the entity "Awesome Pizza" 212 is not included in the sub-set of entities. It can be determined that the sub-set of entities includes multiple entities, e.g., "Great 20 Hotel" 204 and "Not-so-Great Hotel" 206. In response, one entity can be selected. In this example, it can be determined that the entities have at least one attribute in common. For example, each entity in the set of entities has a review rating associated therewith. Consequently, an entity can be selected based on the common attribute. In this example, 25 the entity "Great Hotel" 204 has a better rating than the entity "Not-so-Great Hotel" 206. In response, the entity "Great Hotel" can be selected and the query can be rewritten to explicitly reference the entity "Great Hotel" instead of the entity "Not-so-Great Hotel." For example, the query [show me room rates] can be rewritten to provide the revised query [room rates Great Hotel]. The revised query can be provided to a search service, and search results that are responsive to the revised query can be received. 30

FIG. 3 depicts an example process 300 that can be executed in accordance with implementations of the present disclosure. The example process 300 can be implemented, for example, by the example environment 100 of FIG. 1, e.g., the search system 120 and/or the query interpretation system 130. In some examples, the example process 300

can be provided by one or more computer-executable programs executed using one or more computing devices.

A query Q is received (302). For example, the search system 120 and/or the query interpretation system 130 receives a query from a user device 106, 202. Location data is received (304). For example, the search system 120 and/or the query interpretation system 130 receives location data from the user device 106, 202. In some examples, the location data can be provided with the query. A set of entities is received based on the location data (306). In some examples, entities e within a threshold distance of the user device 106, 202 are determined and are included in the set of entities. In some examples, the set of entities includes m entities, where m is greater than or equal to 1. A counter i is set equal to 1 (308).

It is determined whether the query Q is implicitly about an entity e_i (310). In some examples, and as described herein, if a query pattern associated with the query Q matches an entity query pattern associated with the entity e_i , the query Q is determined to be potentially implicitly about the entity e_i . If the query Q is determined to be implicitly about the entity e_i , the entity e_i is included in a sub-set of entities (312). If the query Q is not determined to be implicitly about the entity e_i , the entity e_i is not included in a sub-set of entities, and it is determined whether the counter i is equal to m (314). If the counter i is not equal to m , all entities in the set of entities have not been considered. Consequently, the counter i is incremented (316), and the example process 300 loops back.

If the counter i is equal to m , all entities in the set of entities have been considered, and it is determined whether the sub-set of entities includes multiple entities (318). If the sub-set of entities does not include multiple entities, the query Q is rewritten based on the entity to provide the revised query (320). If the sub-set of entities includes multiple entities, an entity is selected (322), and the query Q is rewritten based on the entity to provide the revised query (320). In some examples, and as described herein, the entity is selected based on one or more respective attributes of the multiple entities, e.g., rating, popularity. As described herein, the revised query is used, e.g., by the search service 120, to provide search results responsive to the query Q .

FIG. 4 depicts an example process 400 that can be executed in accordance with implementations of the present disclosure. The example process 400 can be implemented, for example, by the example environment 100 of FIG. 1, e.g., the search system 120 and/or the query interpretation system 130. In some examples, the example process 400

can be provided by one or more computer-executable programs executed using one or more computing devices.

A query is received (402). For example, the search system 120 and/or the query interpretation system 130 receives a query from a user device 106, 202. It is determined
5 whether the query is implicitly about some entity (404). For example, it can be determined that the query is associated with a query pattern that indicates that the query is implicitly about some entity. If it is determined that the query is not implicitly about some entity, search results are provided based on the query (406). For example, the search system 120 can receive search results that are responsive to the query, and can provide the
10 search results to the user device 106, 202.

If it is determined that the query is implicitly about some entity, an approximate location of the user device is obtained (408). For example, the search system 120 and/or the query interpretation system 130 receives location data from the user device 106, 202. In some examples, the location data can be provided with the query. A set of entities is
15 obtained (410). For example, the set of entities includes one or more entities that are each a threshold distance from the approximate location of the user device 106, 202. It is determined that the query is implicitly about an entity in the set of entities (414). For example, the entity is selected, because the set of entities includes only the entity. As another example, the entity is selected based on one or more respective attributes, e.g.,
20 rating, popularity, of multiple entities in the set of entities. A revised query is provided (416). For example, the query is rewritten to explicitly reference the entity. Search results are provided based on the revised query (418). For example, the search system 120 can receive search results that are responsive to the revised query, and can provide the search results to the user device 106, 202.

25 Implementations of the subject matter and the operations described in this specification can be realized in digital electronic circuitry, or in computer software, firmware, or hardware, including the structures disclosed in this specification and their structural equivalents, or in combinations of one or more of them. Implementations of the subject matter described in this specification can be realized using one or more computer
30 programs, i.e., one or more modules of computer program instructions, encoded on computer storage medium for execution by, or to control the operation of, data processing apparatus. Alternatively or in addition, the program instructions can be encoded on an artificially generated propagated signal, e.g., a machine-generated electrical, optical, or electromagnetic signal that is generated to encode information for transmission to suitable

receiver apparatus for execution by a data processing apparatus. A computer storage medium can be, or be included in, a computer-readable storage device, a computer-readable storage substrate, a random or serial access memory array or device, or a combination of one or more of them. Moreover, while a computer storage medium is not
5 a propagated signal, a computer storage medium can be a source or destination of computer program instructions encoded in an artificially generated propagated signal. The computer storage medium can also be, or be included in, one or more separate physical components or media (e.g., multiple CDs, disks, or other storage devices).

The operations described in this specification can be implemented as operations
10 performed by a data processing apparatus on data stored on one or more computer-readable storage devices or received from other sources.

The term "data processing apparatus" encompasses all kinds of apparatus, devices, and machines for processing data, including by way of example a programmable processor, a computer, a system on a chip, or multiple ones, or combinations, of the foregoing. The apparatus can include special purpose logic circuitry, e.g., an FPGA (field programmable gate array) or an ASIC (application-specific integrated circuit). The apparatus can also include, in addition to hardware, code that creates an execution environment for the computer program in question, e.g., code that constitutes processor firmware, a protocol stack, a database management system, an operating system, a cross-
15 platform runtime environment, a virtual machine, or a combination of one or more of them. The apparatus and execution environment can realize various different computing model infrastructures, such as web services, distributed computing and grid computing infrastructures.

A computer program (also known as a program, software, software application, script, or code) can be written in any form of programming language, including compiled
25 or interpreted languages, declarative or procedural languages, and it can be deployed in any form, including as a stand-alone program or as a module, component, subroutine, object, or other unit suitable for use in a computing environment. A computer program may, but need not, correspond to a file in a file system. A program can be stored in a portion of a file that holds other programs or data (e.g., one or more scripts stored in a
30 markup language document), in a single file dedicated to the program in question, or in multiple coordinated files (e.g., files that store one or more modules, sub-programs, or portions of code). A computer program can be deployed to be executed on one computer

or on multiple computers that are located at one site or distributed across multiple sites and interconnected by a communication network.

The processes and logic flows described in this specification can be performed by one or more programmable processors executing one or more computer programs to
5 perform actions by operating on input data and generating output. The processes and logic flows can also be performed by, and apparatus can also be implemented as, special purpose logic circuitry, e.g., an FPGA (field programmable gate array) or an ASIC (application-specific integrated circuit).

Processors suitable for the execution of a computer program include, by way of
10 example, both general and special purpose microprocessors, and any one or more processors of any kind of digital computer. Generally, a processor will receive instructions and data from a read-only memory or a random access memory or both. Elements of a computer can include a processor for performing actions in accordance with instructions and one or more memory devices for storing instructions and data.
15 Generally, a computer will also include, or be operatively coupled to receive data from or transfer data to, or both, one or more mass storage devices for storing data, e.g., magnetic, magneto-optical disks, or optical disks. However, a computer need not have such devices. Moreover, a computer can be embedded in another device, e.g., a mobile telephone, a personal digital assistant (PDA), a mobile audio or video player, a game
20 console, a Global Positioning System (GPS) receiver, or a portable storage device (e.g., a universal serial bus (USB) flash drive), to name just a few. Devices suitable for storing computer program instructions and data include all forms of non-volatile memory, media and memory devices, including by way of example semiconductor memory devices, e.g., EPROM, EEPROM, and flash memory devices; magnetic disks, e.g., internal hard disks or removable disks; magneto-optical disks; and CD-ROM and DVD-ROM disks. The
25 processor and the memory can be supplemented by, or incorporated in, special purpose logic circuitry.

To provide for interaction with a user, implementations of the subject matter described in this specification can be implemented on a computer having a display device,
30 e.g., a CRT (cathode ray tube) or LCD (liquid crystal display) monitor, for displaying information to the user and a keyboard and a pointing device, e.g., a mouse or a trackball, by which the user can provide input to the computer. Other kinds of devices can be used to provide for interaction with a user as well; for example, feedback provided to the user can be any form of sensory feedback, e.g., visual feedback, auditory feedback, or tactile

feedback; and input from the user can be received in any form, including acoustic, speech, or tactile input. In addition, a computer can interact with a user by sending documents to and receiving documents from a device that is used by the user; for example, by sending web pages to a web browser on a user's client device in response to requests received from the web browser.

Implementations of the subject matter described in this specification can be implemented in a computing system that includes a back-end component, e.g., as a data server, or that includes a middleware component, e.g., an application server, or that includes a front-end component, e.g., a client computer having a graphical user interface or a Web browser through which a user can interact with an implementation of the subject matter described in this specification, or any combination of one or more such back-end, middleware, or front-end components. The components of the system can be interconnected by any form or medium of digital data communication, e.g., a communication network. Examples of communication networks include a local area network ("LAN") and a wide area network ("WAN"), an inter-network (e.g., the Internet), and peer-to-peer networks (e.g., ad hoc peer-to-peer networks).

The computing system can include clients and servers. A client and server are generally remote from each other and typically interact through a communication network. The relationship of client and server arises by virtue of computer programs running on the respective computers and having a client-server relationship to each other. In some implementations, a server transmits data (e.g., an HTML page) to a client device (e.g., for purposes of displaying data to and receiving user input from a user interacting with the client device). Data generated at the client device (e.g., a result of the user interaction) can be received from the client device at the server.

While this specification contains many specific implementation details, these should not be construed as limitations on the scope of any implementation of the present disclosure or of what may be claimed, but rather as descriptions of features specific to example implementations. Certain features that are described in this specification in the context of separate implementations can also be implemented in combination in a single implementation. Conversely, various features that are described in the context of a single implementation can also be implemented in multiple implementations separately or in any suitable sub-combination. Moreover, although features may be described above as acting in certain combinations and even initially claimed as such, one or more features from a

claimed combination can in some cases be excised from the combination, and the claimed combination may be directed to a sub-combination or variation of a sub-combination.

Similarly, while operations are depicted in the drawings in a particular order, this should not be understood as requiring that such operations be performed in the particular
5 order shown or in sequential order, or that all illustrated operations be performed, to achieve desirable results. In certain circumstances, multitasking and parallel processing may be advantageous. Moreover, the separation of various system components in the implementations described above should not be understood as requiring such separation
10 in all implementations, and it should be understood that the described program components and systems can generally be integrated together in a single software product or packaged into multiple software products.

Thus, particular implementations of the subject matter have been described. Other implementations are within the scope of the following claims. In some cases, the actions recited in the claims can be performed in a different order and still achieve desirable
15 results. In addition, the processes depicted in the accompanying figures do not necessarily require the particular order shown, or sequential order, to achieve desirable results. In certain implementations, multitasking and parallel processing may be advantageous.

CLAIMS

1. A computer-implemented method executed by one or more processors, the method comprising:
- receiving, by the one or more processors, a query provided from a user device;
- 5 and
- determining, by the one or more processors, that the query implicitly references some entity, and in response:
- obtaining, by the one or more processors, an approximate location of the user device,
- 10 obtaining, by the one or more processors, a set of entities comprising one or more entities, each entity in the set of entities being associated with the approximate location,
- selecting, by the one or more processors, an entity from the set of entities based on one or more entity query patterns associated with the entity, and
- 15 providing, by the one or more processors, a revised query based on the query and the entity, the revised query explicitly referencing the entity.
2. The method of claim 1, wherein selecting an entity from the set of entities based on one or more entity query patterns associated with the entity includes:
- 20 obtaining a set of entity query patterns associated with the entity, the set of entity query patterns comprising the one or more entity query patterns; and
- determining that an entity query pattern of the set of entity query patterns matches a query pattern of the query.
- 25 3. The method of claim 1, wherein an entity query pattern of the one or more entity query patterns is based on one or more queries that explicitly reference the entity.
4. The method of claim 1, wherein the one or more entity query patterns are associated with a search log.
- 30 5. The method of claim 2, further comprising determining that the set of entities comprises a plurality of entities, and in response, selecting the entity from the set of entities.

6. The method of claim 5, further comprising comparing one or more attributes of respective entities in the sub-set of entities, the entity being selected based on respective one or more attributes.

5

7. The method of claim 1, wherein, if a location of a respective entity is within a threshold distance of the approximate location, the respective entity is included in the set of entities.

10

8. A system comprising:
a data store for storing data; and
one or more processors configured to interact with the data store, the one or more processors being further configured to perform operations comprising:

15

receiving a query provided from a user device; and

determining that the query implicitly references some entity, and in response:

20

obtaining an approximate location of the user device,
obtaining a set of entities comprising one or more entities, each entity in the set of entities being associated with the approximate location,

selecting an entity from the set of entities based on one or more entity query patterns associated with the entity, and

providing a revised query based on the query and the entity, the revised query explicitly referencing the entity.

25

9. The system of claim 8, wherein selecting an entity from the set of entities based on one or more entity query patterns associated with the entity includes:

obtaining a set of entity query patterns associated with the entity, the set of entity query patterns comprising the one or more entity query patterns; and

30

determining that an entity query pattern of the set of entity query patterns matches a query pattern of the query.

10. The system of claim 8, wherein an entity query pattern of the one or more entity query patterns is based on one or more queries that explicitly reference the entity.

11. The system of claim 8, wherein the one or more entity query patterns are associated with a search log.
- 5 12. The system of claim 9, wherein operations further comprise determining that the set of entities comprises a plurality of entities, and in response, selecting the entity from the set of entities.
13. The system of claim 12, wherein operations further comprise comparing one or
10 more attributes of respective entities in the set of entities, the entity being selected based on respective one or more attributes.
14. The system of claim 8, wherein, if a location of a respective entity is within a
15 threshold distance of the approximate location, the respective entity is included in the set of entities.
15. A computer readable medium storing instructions that, when executed by one or more processors, cause the one or more processors to perform operations comprising:
receiving a query provided from a user device; and
20 determining that the query implicitly references some entity, and in response:
obtaining an approximate location of the user device,
obtaining a set of entities comprising one or more entities, each
entity in the set of entities being associated with the approximate
location,
25 selecting an entity from the set of entities based on one or more
entity query patterns associated with the entity, and
providing a revised query based on the query and the entity, the
revised query explicitly referencing the entity.
- 30 16. The computer readable medium of claim 15, wherein selecting an entity from the set of entities based on one or more entity query patterns associated with the entity includes:
obtaining a set of entity query patterns associated with the entity, the set of entity
query patterns comprising the one or more entity query patterns; and

determining that an entity query pattern of the set of entity query patterns matches a query pattern of the query.

17. The computer readable medium of claim 15, wherein an entity query pattern of the
5 one or more entity query patterns is based on one or more queries that explicitly reference the entity.

18. The computer readable medium of claim 15, wherein the one or more entity query
10 patterns are associated with a search log.

19. The computer readable medium of claim 16, wherein operations further comprise
determining that the set of entities comprises a plurality of entities, and in response,
selecting the entity from the set of entities.

20. The computer readable medium of claim 19, wherein operations further comprise
15 comparing one or more attributes of respective entities in the set of entities, the entity being selected based on respective one or more attributes.

21. The computer readable medium of claim 15, wherein, if a location of a respective
20 entity is within a threshold distance of the approximate location, the respective entity is included in the set of entities.

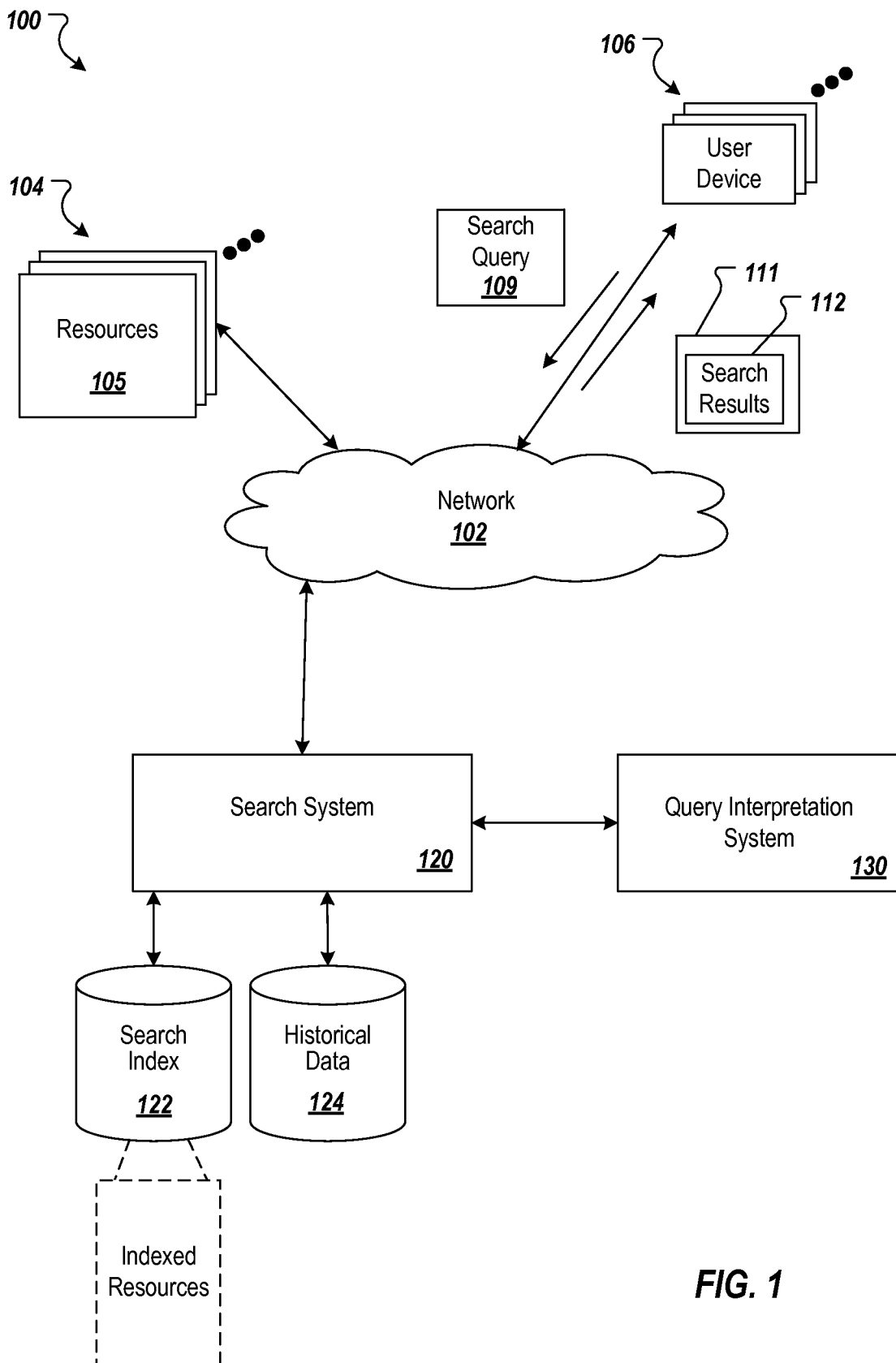


FIG. 1

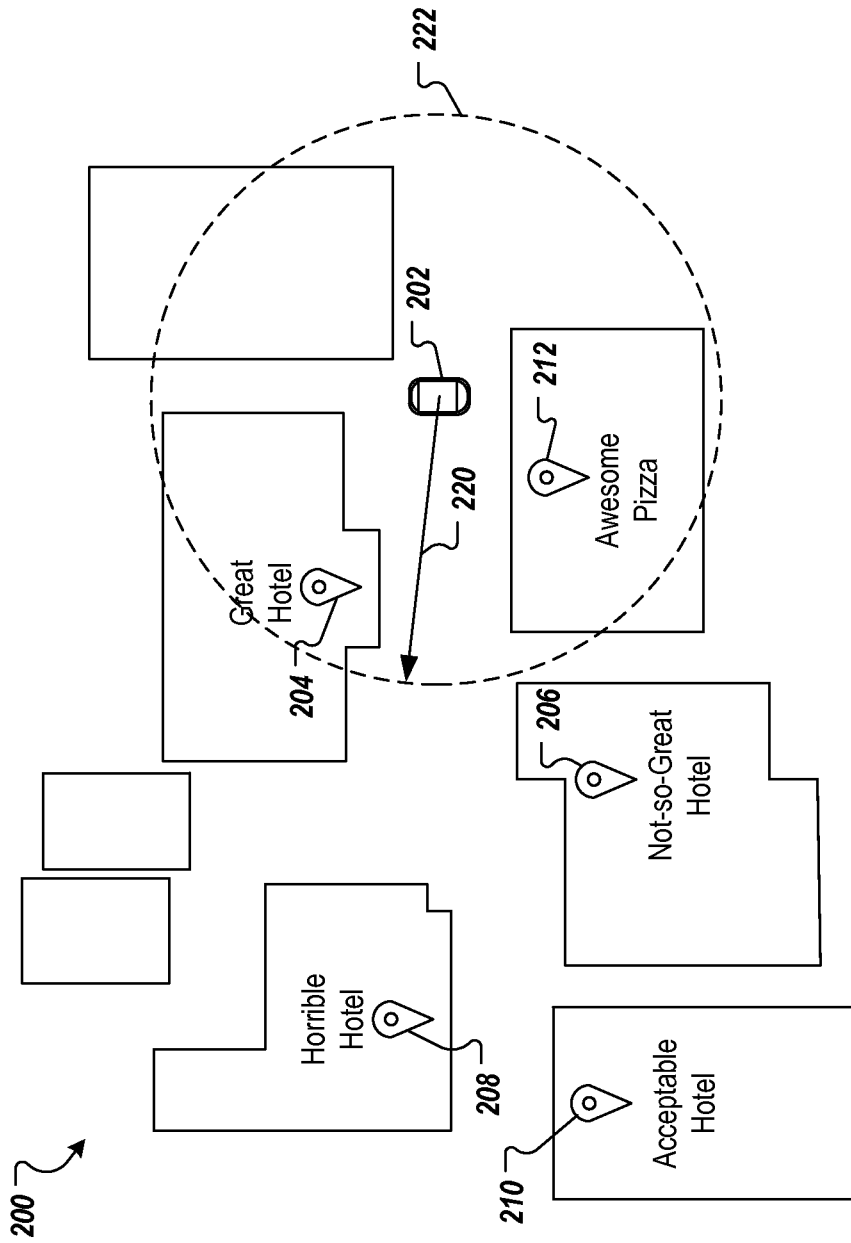


FIG. 2A

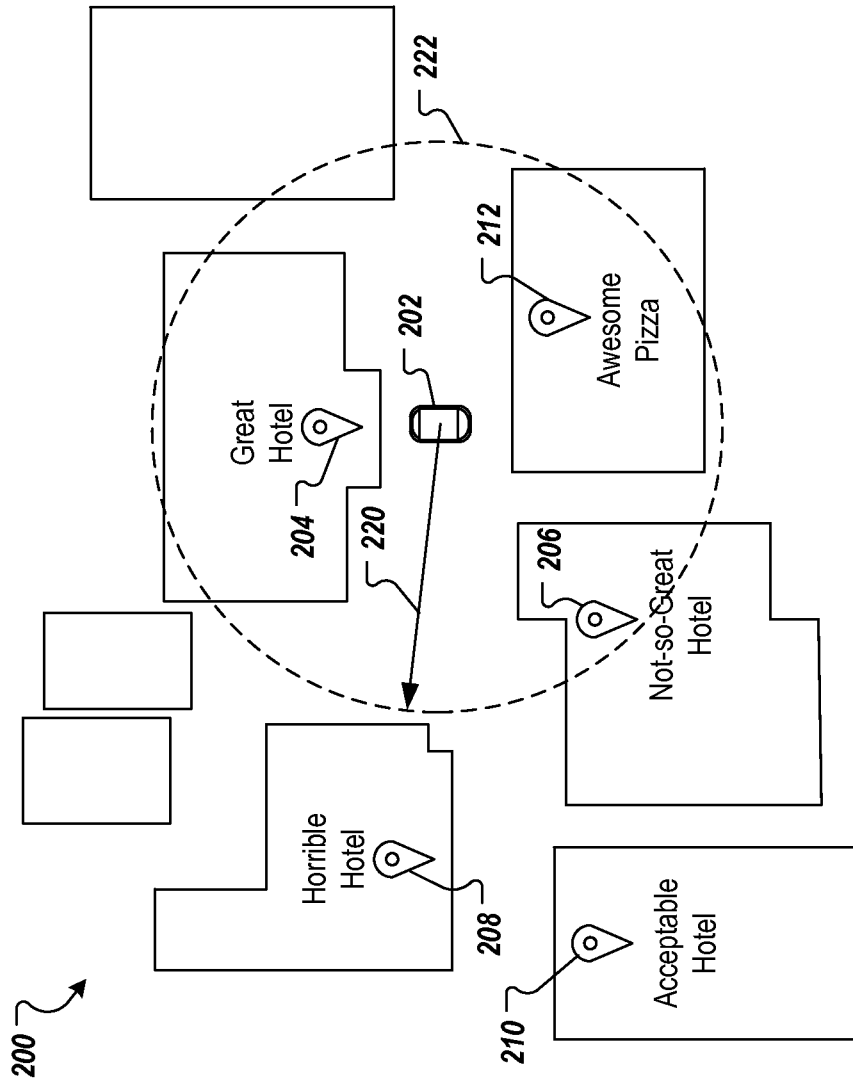


FIG. 2B

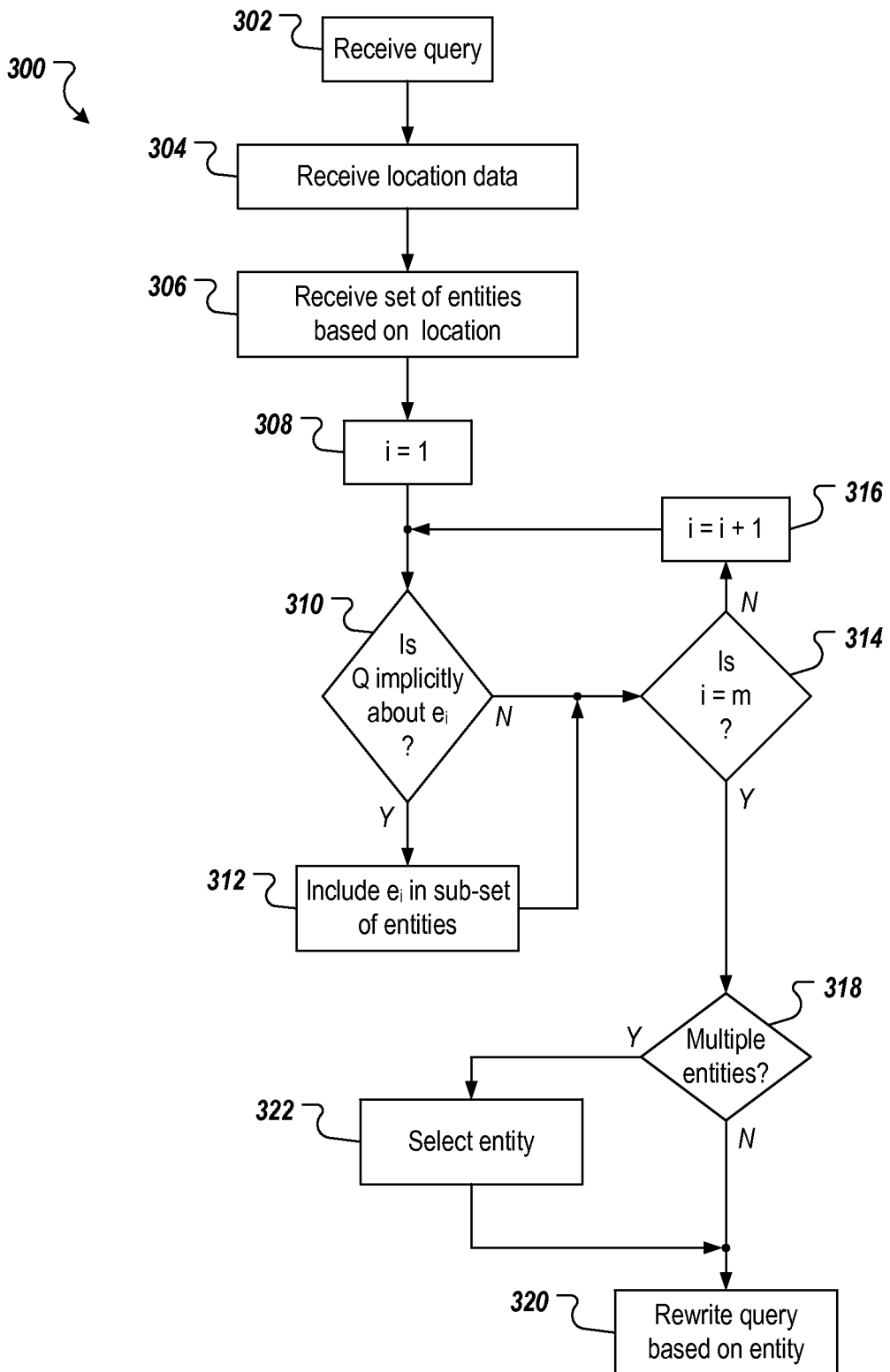


FIG. 3

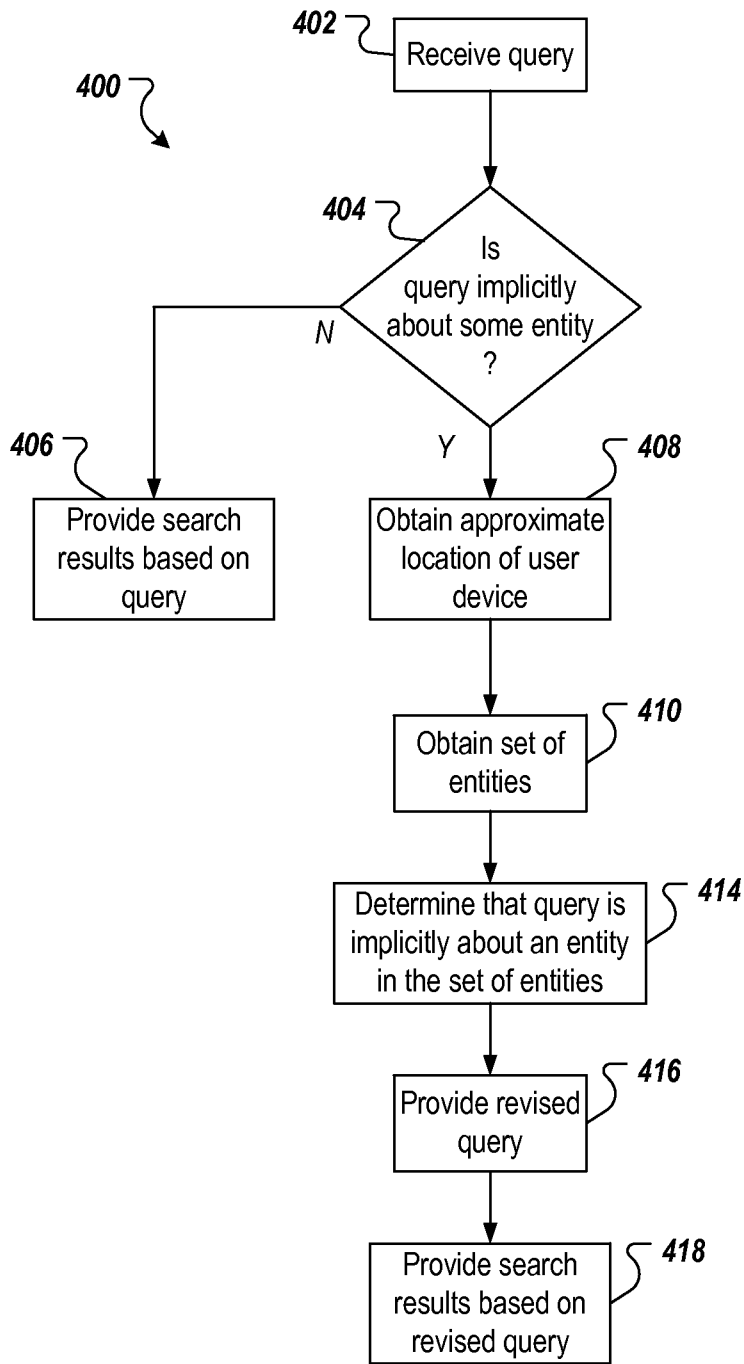


FIG. 4

INTERNATIONAL SEARCH REPORT

International application No
PCT/US2015/045539

A. CLASSIFICATION OF SUBJECT MATTER
INV. G06F17/30
ADD.

According to International Patent Classification (IPC) or to both national classification and IPC

B. FIELDS SEARCHED

Minimum documentation searched (classification system followed by classification symbols)
G06F

Documentation searched other than minimum documentation to the extent that such documents are included in the fields searched

Electronic data base consulted during the international search (name of data base and, where practicable, search terms used)

EPO-Internal , WPI Data

C. DOCUMENTS CONSIDERED TO BE RELEVANT

Category*	Citation of document, with indication, where appropriate, of the relevant passages	Relevant to claim No.
X	US 2011/313657 AI (MYLLYMAKI JUSSI [FI] ET AL) 22 December 2011 (2011-12-22) abstract paragraphs [0002] , [0004] , [0005] , [0008] , [0022] , [0023] , [0026] , [0027] , [0036] , [0039] , [0060] , [0063] , [0064] , [0067] , [0072] , [0074] , [0081] -----	1-21
X	US 2012/143859 AI (LYMPEROPoulos DIMITRIOS [US] ET AL) 7 June 2012 (2012-06-07) abstract paragraphs [0029] , [0030] , [0036] , [0042] , [0047] , [0048] ; figures 1,2,4 ----- -/- .	1-21

Further documents are listed in the continuation of Box C.

See patent family annex.

* Special categories of cited documents :

"A" document defining the general state of the art which is not considered to be of particular relevance

"E" earlier application or patent but published on or after the international filing date

"L" document which may throw doubts on priority claim(s) or which is cited to establish the publication date of another citation or other special reason (as specified)

"O" document referring to an oral disclosure, use, exhibition or other means

"P" document published prior to the international filing date but later than the priority date claimed

"T" later document published after the international filing date or priority date and not in conflict with the application but cited to understand the principle or theory underlying the invention

"X" document of particular relevance; the claimed invention cannot be considered novel or cannot be considered to involve an inventive step when the document is taken alone

"Y" document of particular relevance; the claimed invention cannot be considered to involve an inventive step when the document is combined with one or more other such documents, such combination being obvious to a person skilled in the art

"&" document member of the same patent family

Date of the actual completion of the international search

12 November 2015

Date of mailing of the international search report

18/11/2015

Name and mailing address of the ISA/

European Patent Office, P.B. 5818 Patentlaan 2
NL - 2280 HV Rijswijk
Tel. (+31-70) 340-2040,
Fax: (+31-70) 340-3016

Authorized officer

Si odmok, Woj ci ech

INTERNATIONAL SEARCH REPORT

International application No
PCT/US2015/045539

C(Continuation). DOCUMENTS CONSIDERED TO BE RELEVANT		
Category*	Citation of document, with indication, where appropriate, of the relevant passages	Relevant to claim No.
A	US 2008/097966 A1 (CHOI JIN WAN [KR] ET AL) 24 April 2008 (2008-04-24) abstract paragraphs [0026], [0028] - [0030], [0037] - [0041]; figures 2,8 -----	1-21

INTERNATIONAL SEARCH REPORT

Information on patent family members

International application No PCT/US2015/045539

Patent document cited in search report	Publication date	Patent family member(s)	Publication date
US 2011313657 AI	22-12-2011	JP 2013534005 A	29-08-2013
		KR 20130094290 A	23-08-2013
		US 2011313657 AI	22-12-2011
		Wo 2011159475 AI	22-12-2011

US 2012143859 AI	07-06--2012	CN 102591911 A	18-07-2012
		EP 2646973 A2	09-10-2013
		KR 20130130731 A	02-12-2013
		US 2012143859 AI	07-06-2012
		Wo 2012075273 A2	07-06-2012

US 2008097966 AI	24.04.-2008	KR 20080035089 A	23-04-2008
		US 2008097966 AI	24-04-2008
